



Installation Instructions – KTM 1090R/1190R/1290SA R Skid Plate

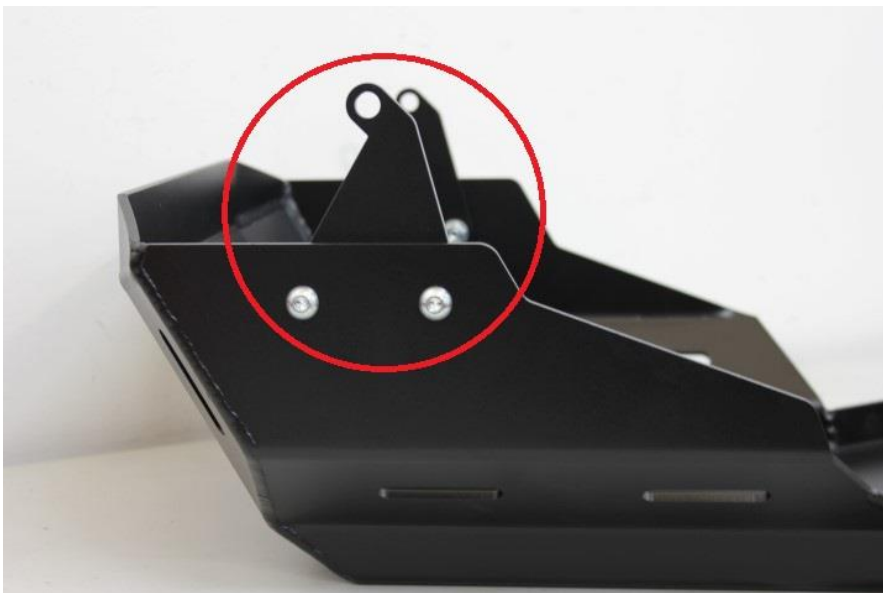
Thank you for purchasing a BUMOT skid plate for your motorcycle. BUMOT parts, handcrafted in Bulgaria, is designed for the rider who demands the most durable and functional ones for their adventure touring. We're confident you will enjoy your new skid plate for years to come.

Installation Hardware Contents -

- M10x50 Button Head Bolt – Qty 2
- M10 Nut– Qty 2
- M8x20 Button Head Bolt – Qty 12
- M8 Washer – Qty 8
- M8 Nut – Qty 8
- M10x80 Socked Head Cap Bolt – Qty 2
- 17 mm spacer – Qty 1
- 22 mm spacer – Qty 1

Instructions –

1. The front brackets has to be attached with M8x20 Button Head Bolt, M8 Washer and M8 nut on each side, as shown on the picture. Do not tight them!



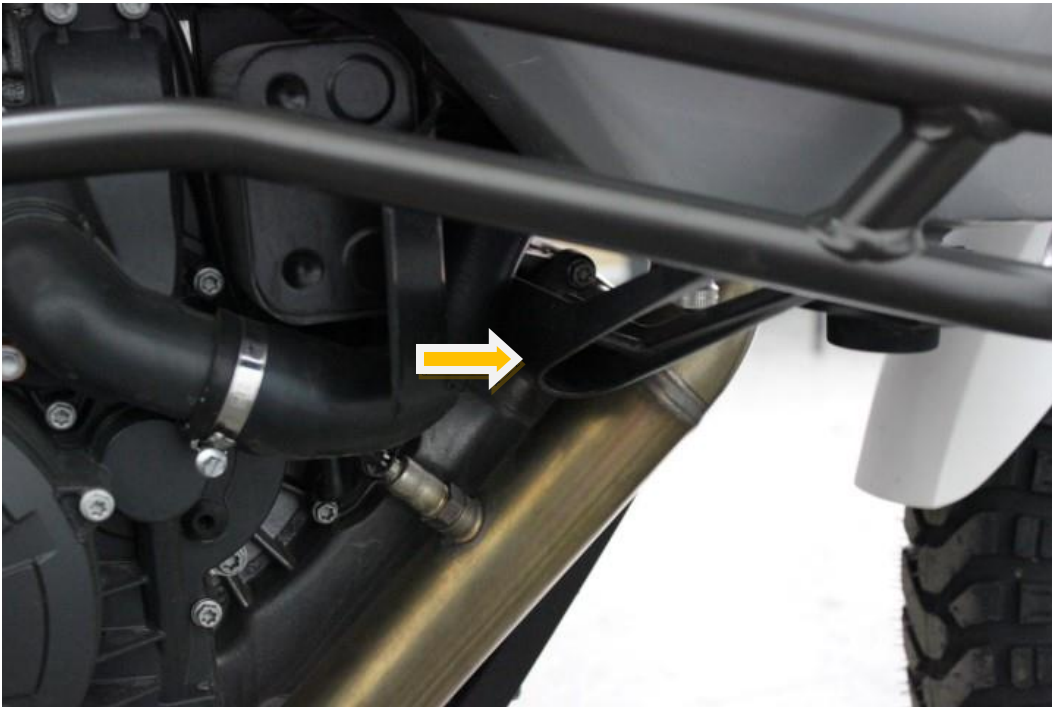
2. Remove the OEM skid plate



3. Place bike on center stand and remove both rider foot pegs and foot peg mounts. To remove the right side peg, you will need to loosen the rear brake arm. You will reuse all parts except for the bolts holding the peg mounts in place to the frame.



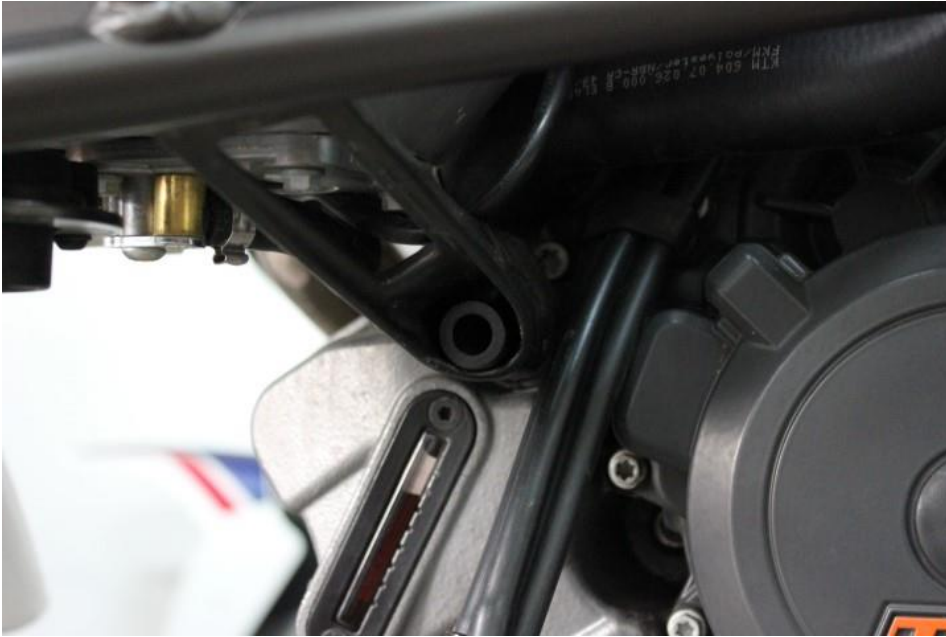
4. Remove the front M10 bolts holding the crash bars on each side.



5. Attach the bracket and foot peg mount as shown on the pictures with two bolts M8x20 Button head bolts using thread locker and tight them. Do the same on the right side.



6. Use the 17 mm spacer on the left side and the 22 mm spacer on the right side.



7. Attach the rear side of the skid plate using M10x50 Button Head Bolt and M10 nut on both sides. Do not tight the bolts yet.





8. Attach the front side of the skid plate using bolt M10x80 from the left and right side as shown on the picture. Use thread locker. Tight all bolts !



9. Mount the foot pegs.

Enjoy!

BUMOT Motorcycle Luggage
Ph:+359 887 649 709
www.bumot.eu
info@bumot.eu

