



Installation Instructions – HONDA CRF1000 Africa Twin Manual transmission Skid Plate

Thank you for purchasing a BUMOT skid plate for your motorcycle. BUMOT parts, handcrafted in Bulgaria, is designed for the rider who demands the most durable and functional ones for their adventure touring. We're confident you will enjoy your new skid plate for years to come.

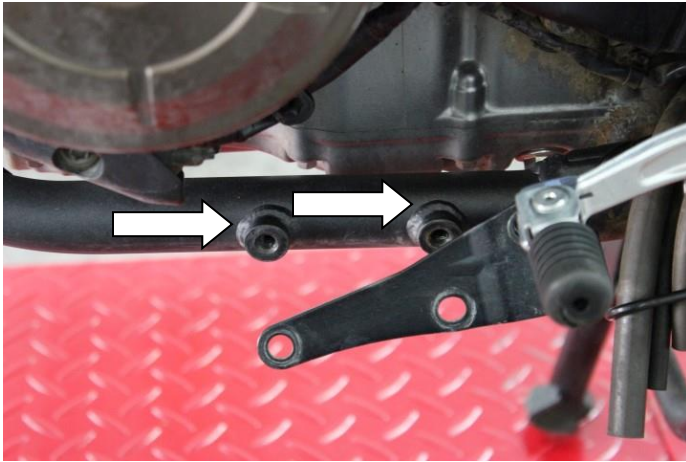
Installation Hardware Contents -

- M8x16 Counter Sunk Bolt – Qty 2
- M8x50 Counter Sunk Bolt – Qty 2
- M8 Finish Washer – Qty 2
- Stainless steel bracket – Qty 1

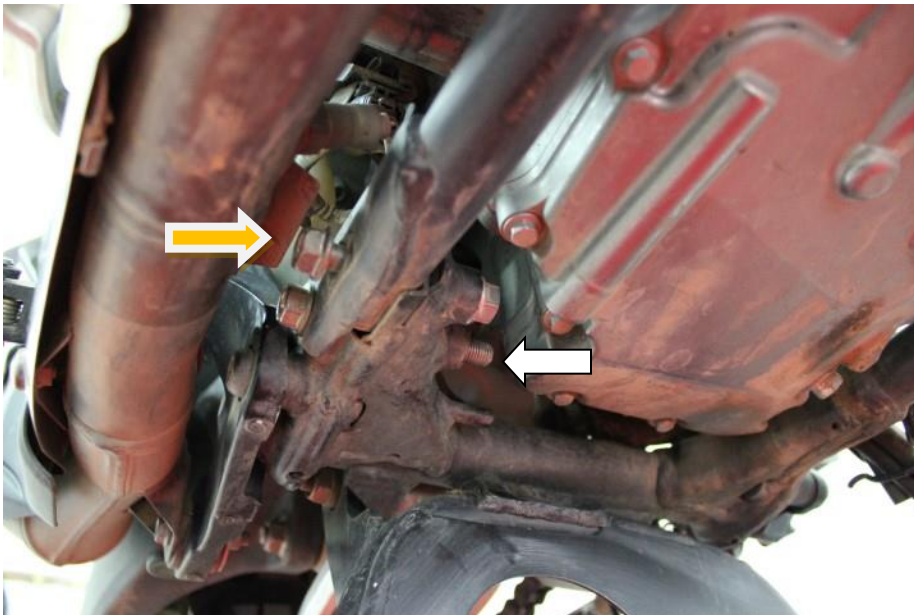
Instructions -

1. Remove the OEM skid plate

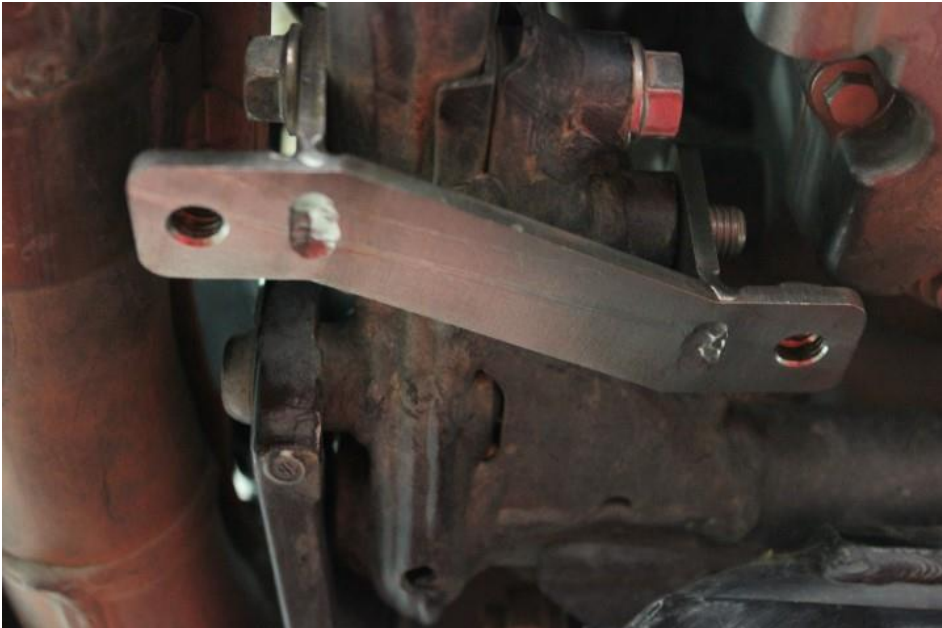
2. Remove the two bolts as shown on the picture.



3. Remove the nut from the rear bolt (white arrow) and loose only the front one (yellow arrow)



4. Attach the bracket as shown on the pictures:



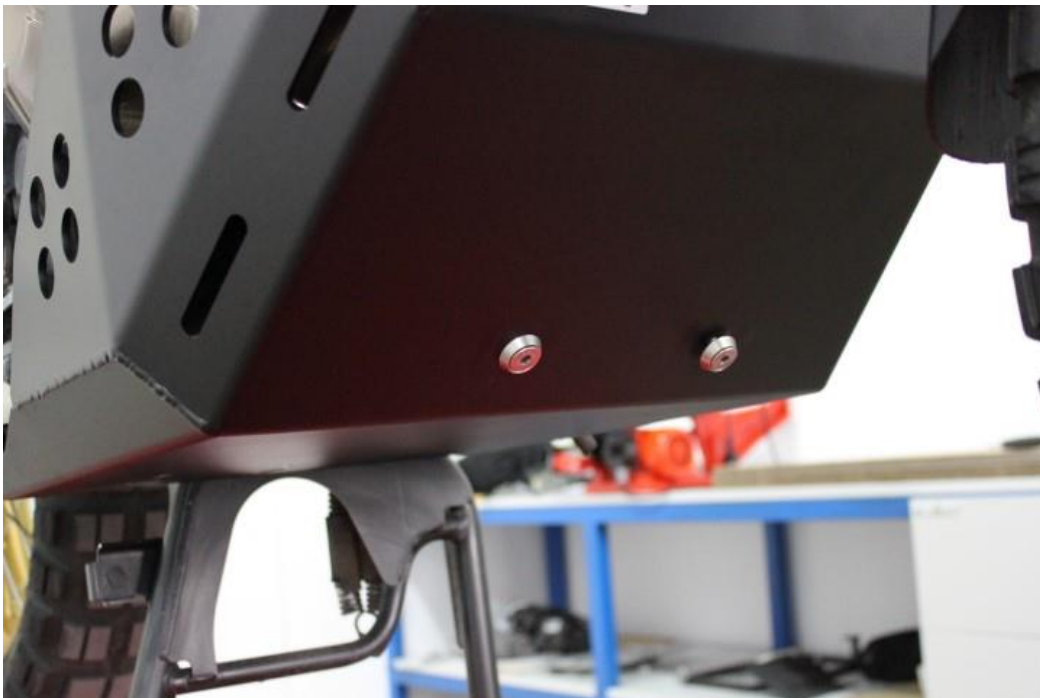
5. Tight the two bolts .



The bracket has to be in horizontal position as shown on the picture !



6. Use M8x50 Bolts and M8 Finish washers to attach skid plate to the bike. Do not tight them, left gap 1mm



7. Attach the skid plate bracket using two OEM bolts as shown on the picture. Do not tight them!



8. Use M8 x 16 bolts to attach the bottom of skid plate and tight them.



9. Tight the front bolts M8x50 and the two OEM ones

Enjoy!

